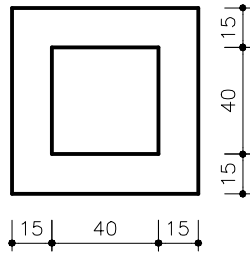
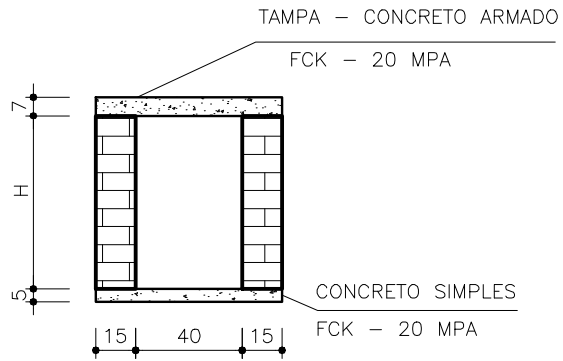


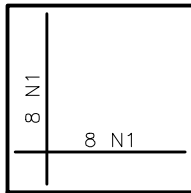
CAIXA EM ALVENARIA - 0,70 X 0,70 M



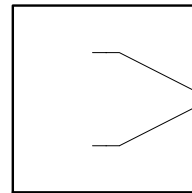
VISTA SUPERIOR
ESCALA - 1:50



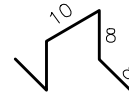
VISTA LATERAL EM CORTE
ESCALA - 1:50



N1 - Ø6.3 C/10 - C=64
TAMPA - ARMAÇÃO



TAMPA - DETALHE ALÇA
ESCALA - 1:50



Relação do Aço

AÇO	N	DIAM	Q	UNIT (cm)	C.TOTAL (cm)
CA50	1	6.3	16	64	1024
CA50	2	10.0	2	42	84

Resumo do Aço

AÇO	DIAM	C.TOTAL (m)	PESO + 10 % (kg)
CA50	6.3	1024	2.8
CA50	10.0	84	0.6
PESO TOTAL (kg)			
CA50		2.8	
CA60		0.6	